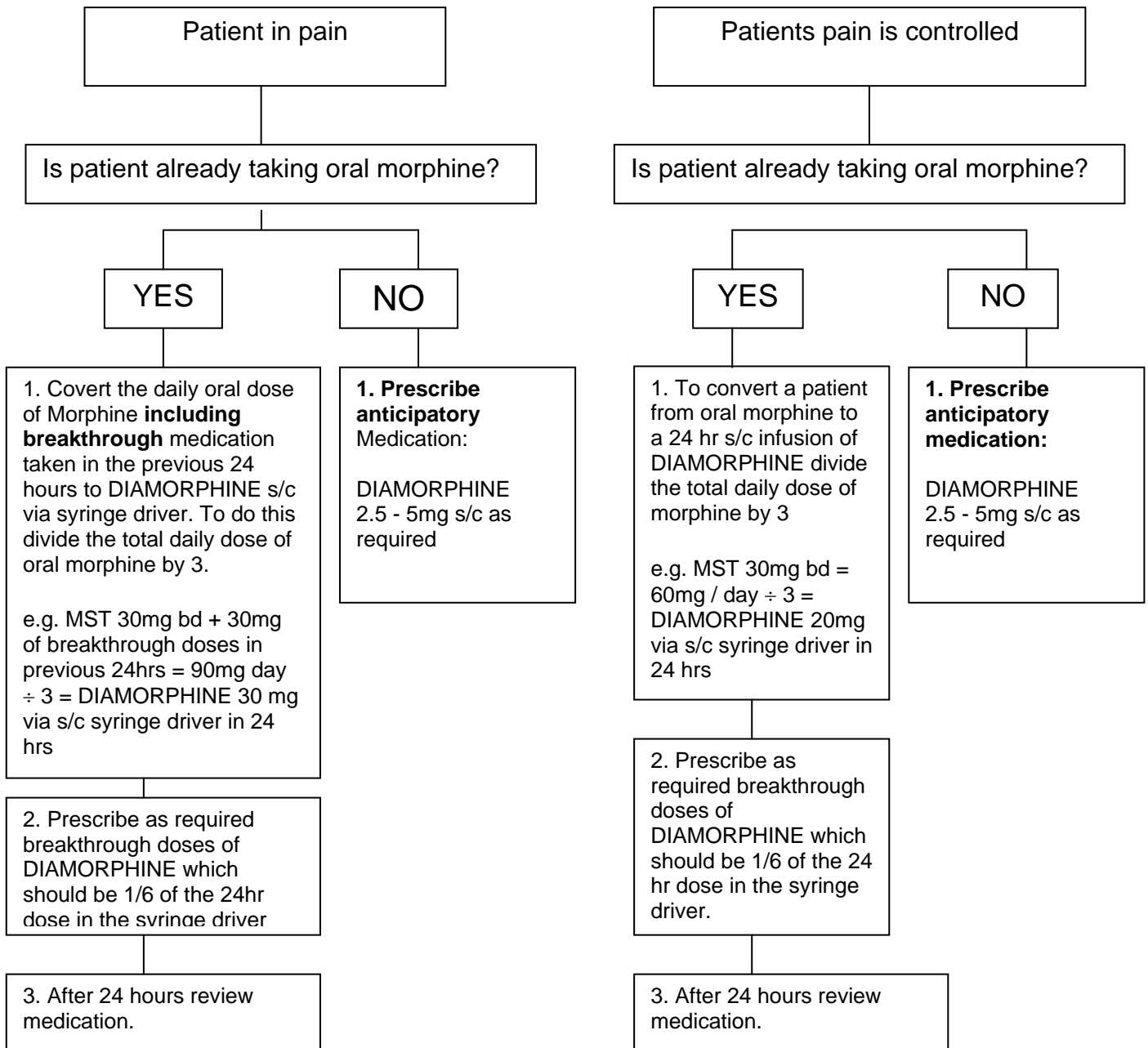


Prescribing Algorithm for Pain in the DYING PHASE using **DIAMORPHINE** for SC injections

If the patient is **not** in the dying phase then please consult the **West Midlands Guidelines** for symptom control in palliative care and follow the WHO analgesic ladder. Remember to assess for reversible causes of pain and discomfort: for example constipation. If patient has Fentanyl patch, please refer to guidance on the back of this algorithm.



If symptoms persist or if advice is needed then please contact specialist palliative care:

Contact details for specialist palliative care **in hours** Mon - Fri:

Add local information

Contact details for specialist palliative care **out of hours**:

Add local information

Solihull CT algorithm for anticipatory medication 2006

Developed by Helen Meehan Lead Nurse Palliative Care Solihull Care Trust, in consultation with local working group of clinicians and Pan Birmingham Palliative Care Network