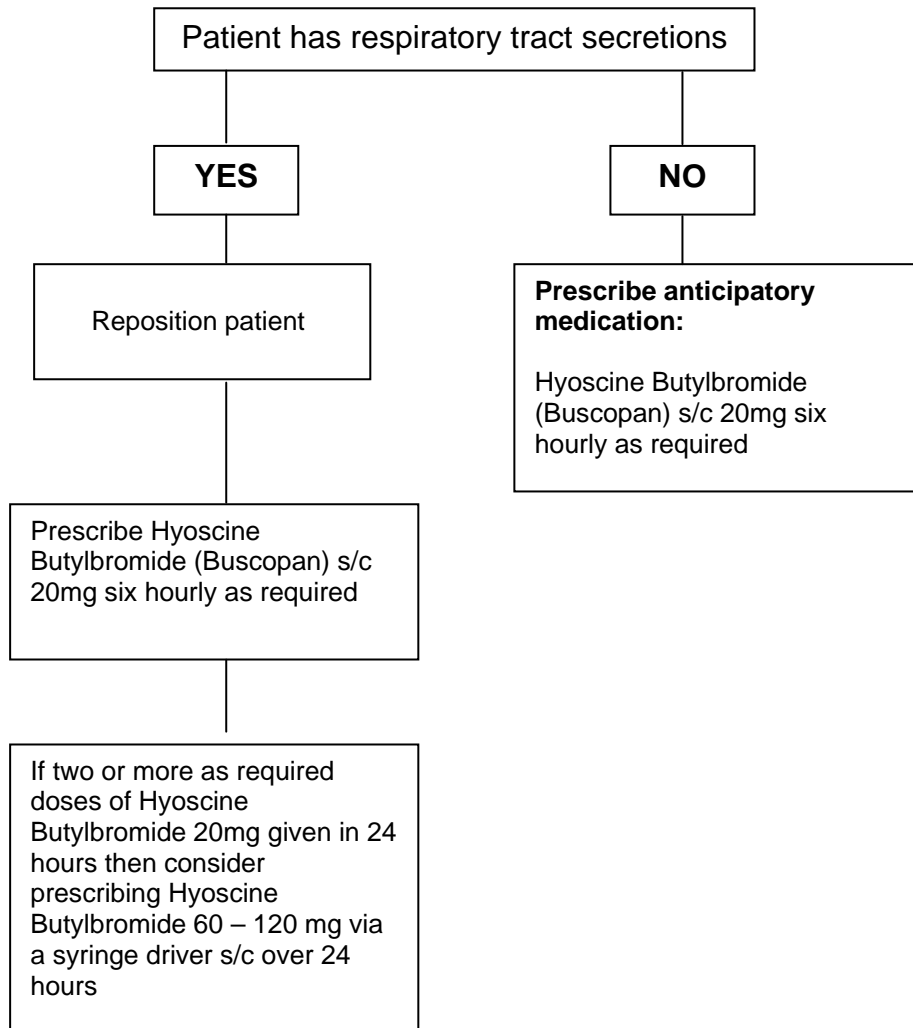


## Prescribing algorithm for Excessive Respiratory Secretions in the DYING PHASE

Secretions are often more distressing to the family and carers than to the patient themselves. If the patient is not distressed careful explanation of this may avoid the need for drugs.



It should be remembered that drug treatment does not reduce the quantity, or cause re-absorption of secretions already produced. It will only reduce the production of further secretions. Furthermore, drying up secretions will cause a dry mouth, which some patients may find uncomfortable.

**If symptoms persist or if advice is needed then please contact specialist palliative care:**

Contact details for specialist palliative care **in hours** Mon - Fri:

[Add local information](#)

Contact details for specialist palliative care **out of hours**:

[Add local information](#)